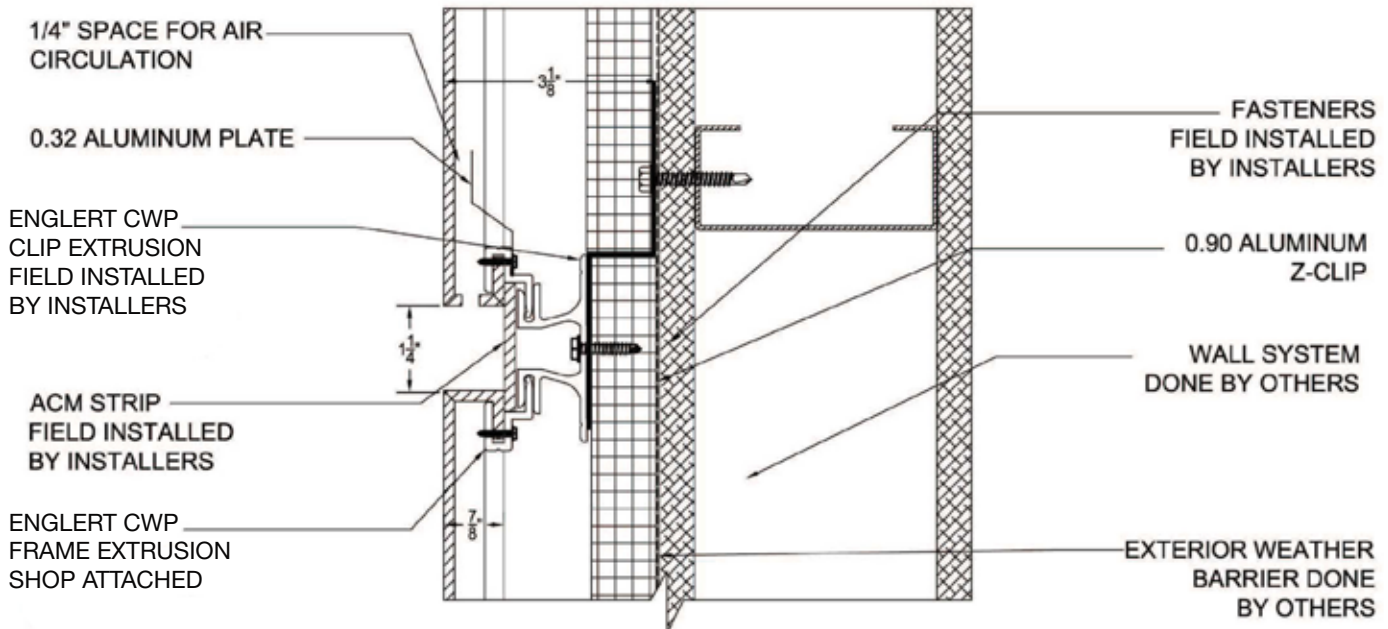


## Typical Joint Detail



PANELS OVER 24" SUPPORTED WITH U-SHAPE STIFFENERS ATTACHED WITH CAULKING

1" INSULATION

**NOTE:**

-JOINT WIDTH IS ADJUSTABLE  
 -SYSTEM CAN BE USED WITH 4MM OR 6MM ALUMINUM COMPOSITE MATERIAL FOR EXTERIOR APPLICATION AND 3MM OR 4MM ALUMINUM COMPOSITE MATERIAL FOR INTERIOR APPLICATION

ASTM: AAMA 508

**NOTE:**

-JOINT WIDTH IS ADJUSTABLE  
 -SYSTEM CAN BE USED WITH 4MM OR 6MM ALUMINUM COMPOSITE MATERIAL FOR EXTERIOR APPLICATION AND 3MM OR 4MM ALUMINUM COMPOSITE MATERIAL FOR INTERIOR APPLICATION

## ***Englert CWP200 Pressurized Rain Screen System***